

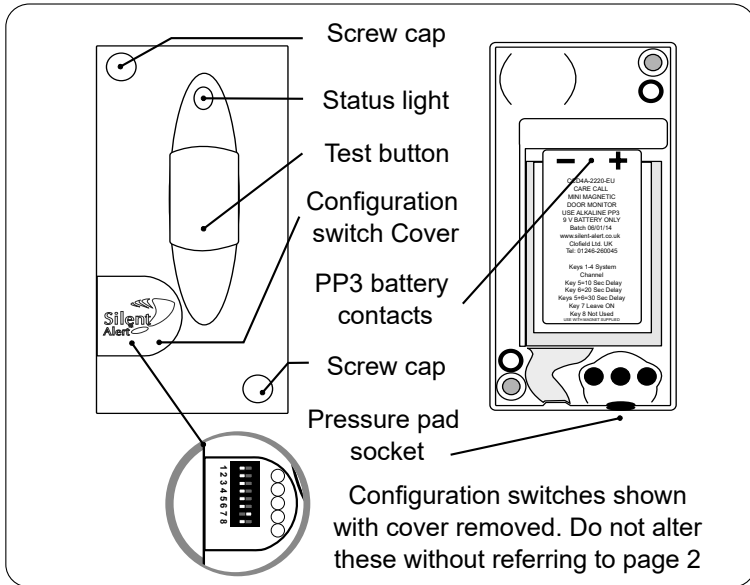
Quick start guide CL4A-2212-EU MKII

Mini Chair Leaving Monitor



PM5 Activation

Any questions? Call us on 01246 450789



1. Install a 9 volt PP3 alkaline or lithium battery making sure to observe the correct polarity.

When a battery is first fitted the indicator light will flash red then green a few times.

The light will then will flash green several times to show the battery voltage.
9 flashes = 9Volts in the battery.

If the light flashes red at this point the battery is flat and will need to be replaced.

To repeat the battery check remove the battery, press the test button then re-insert the battery to start the sequence again.

2. The monitor is activated using a chair pressure pad (PM5).

Plug the PM5 plug into the socket on the monitor

The monitor may transmit the first time the connection is made, this is normal.

The 3.5mm jack socket will trigger the unit on a short circuit only.

! The Mini Monitor socket can be used with auxiliary equipment that presents a short circuit to a 3.5mm jack plug. DO NOT connect the unit to voltage or damage may occur to the unit. If in doubt, please call 01246 450789.

3. Place the pad under the chair cushion ensuring the pad is not folded.

When installing the pad make sure the cable can't cause a trip hazard.

4. As the user stands up the monitor will send a signal to the Pager or SignWave.

5. Fidget delay

To prevent the unit triggering when the user changes position in their seat the monitor has a 'fidget' delay.

If the person releases the pressure from the pad a timer will start, this is indicated by the green light flashing on the monitor.

After 3 - 4 seconds the monitor will trigger. However, if the person sits back down the light will switch off and the monitor will not transmit.

If this delay is not required or if the monitor is being used to detect an open circuit switch key 6 to on. The unit will now send radio as soon as it is triggered.

Advanced settings CL4A-2212-EU MKII

Mini Chair Leaving Monitor



Any questions? Call us on 01246 450789

It is possible for the monitor to light up a different key on the Pager or SignWave. This allows more than one chair leaving monitor to be used on a SA3000 system.

Silent Alert SA3000 system
 Operating Frequency: **869MHz**
 Output power: **<10mW**
 Hereby, Clofield Ltd declares this radio equipment is in compliance with Directive 2014/53/EU.
 The full text of the EU declaration can be found at www.silent-alert.co.uk

Move the relevant key to the right .

Trigger the unit and check the correct event is received by the Pager or SignWave.

Key 7 must be left on.



Do not disassemble.



Do not immerse the Monitor in water or any other liquid.



WARNING! Your device and its accessories are not toys. They may contain small parts. Keep them out of the reach of small children.

Changing the trigger delay

It is possible to set trigger delays allowing a set amount of time to pass for the user to return to the chair before the monitor will transmit.

- To change the delay you need to reset the monitor:
 Remove the battery, press the push button, replace the battery.
- After the flashing red/green startup sequence the light will shine constant green.
- Press and release the button whilst the light is green. The light will flash red once, twice then three times .
- To set the delay, briefly press the test button at the desired number of flashes.
- 1 flash = 10 seconds
 2 flashes = 20 seconds
 3 flashes = 30 seconds
 The indicator light will light green to confirm the selection.
- The monitor will then perform the battery voltage level display and start as normal. Press the test button to confirm the correct zone has been selected.

Changing the system channel code

NOTE. In most cases it is not necessary to change the system code. However, when one or more systems are in close proximity, system codes can be used to avoid interference from other SA3000 systems using up to a maximum of 16 channels.

The monitor is supplied with no system code switches set (system code 1). For reference this is the factory setting should you need to re-set the unit.

System codes can be set using key switches 1 - 4.

The diagram to the right shows the 16 possible combinations.

KEY 7 MUST BE LEFT ON

Be sure that the same system code is set on the receiver to be used and any other monitoring options in that system.

1	2	3	4	5	6	7	8
9	10	11	12	13	14	15	16